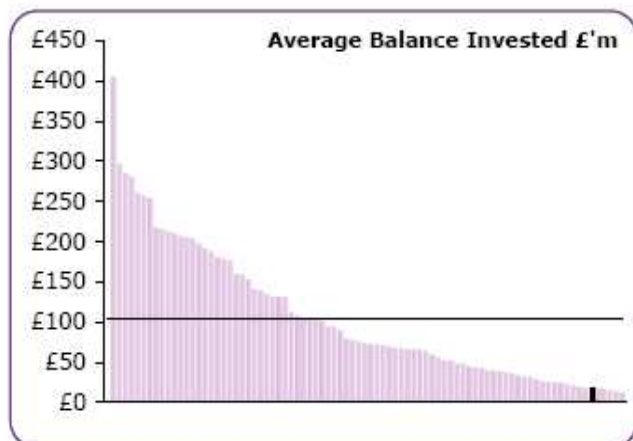
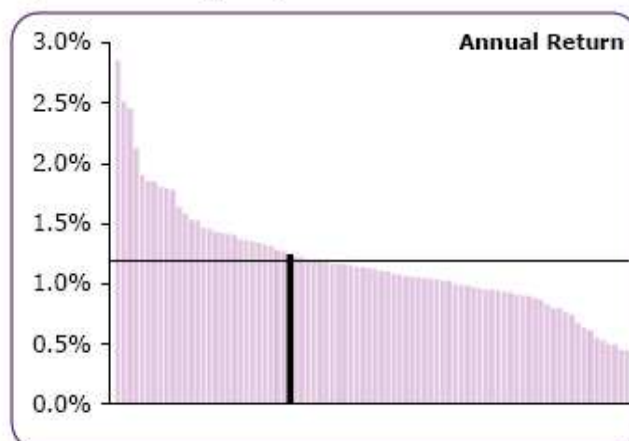


Benchmarking Data

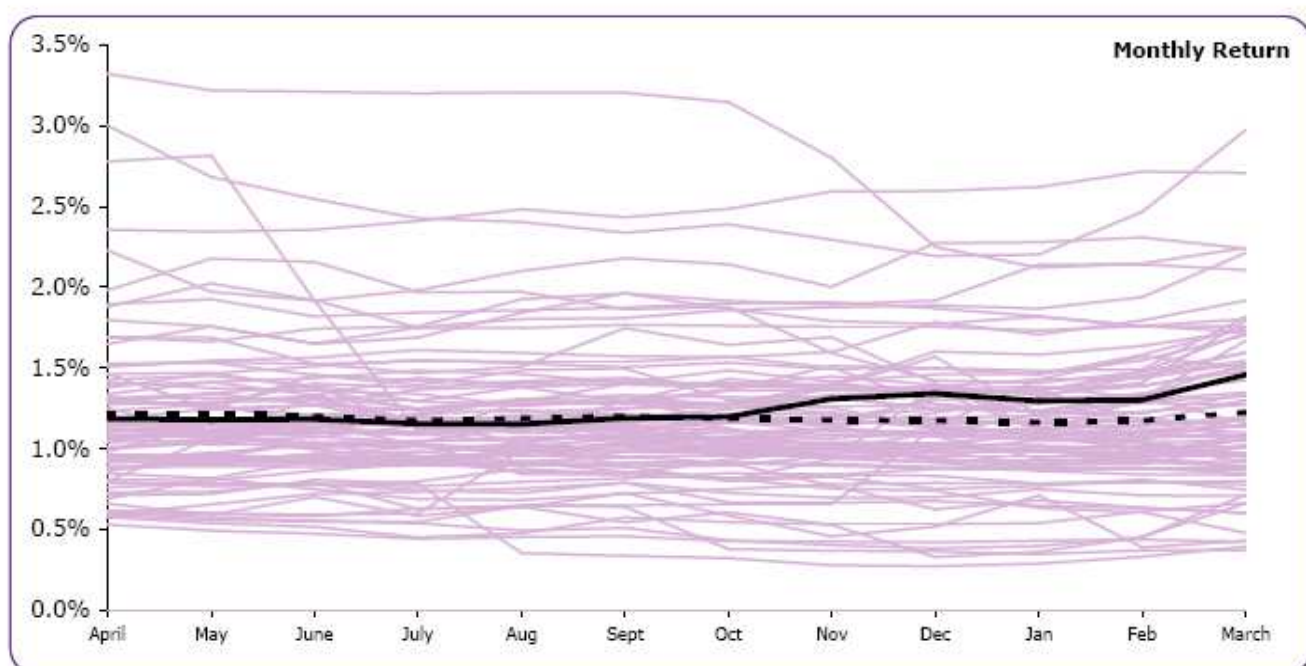
COMBINED IN-HOUSE INVESTMENTS (excluding impaired investments)



Tamworth 17.4 Avg 105.3

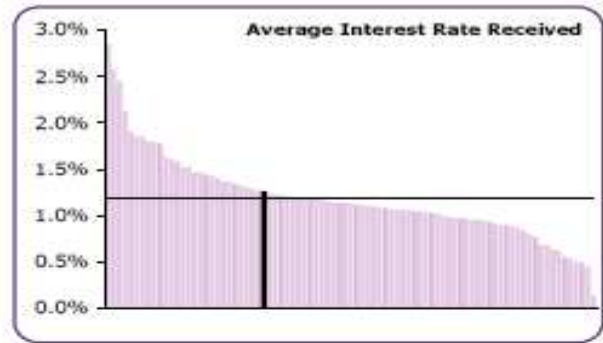
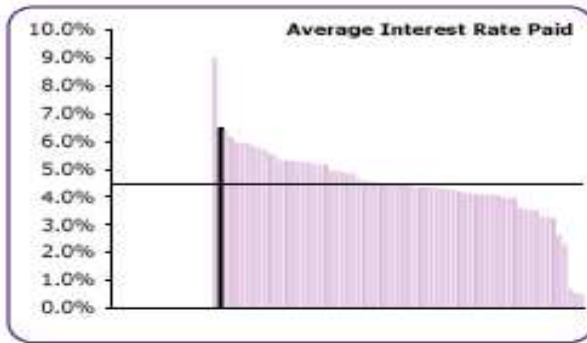


Tamworth 1.25% Avg 1.19%



Monthly Return (April 11 - March 12)													
	April	May	June	July	Aug	Sept	Oct	Nov	Dec	Jan	Feb	March	Year
Av Bal £'m	15.72	16.30	16.65	17.57	18.03	17.92	19.00	18.21	18.23	19.08	17.12	15.16	17.42
Earned £'k	15.3	16.3	16.2	17.2	17.6	17.5	19.3	19.6	20.8	21.0	17.7	18.8	217.4
% Return	1.19%	1.18%	1.18%	1.16%	1.15%	1.19%	1.20%	1.31%	1.34%	1.30%	1.30%	1.46%	1.25%
Average	1.21%	1.21%	1.20%	1.18%	1.19%	1.20%	1.19%	1.18%	1.17%	1.16%	1.17%	1.23%	1.19%
Margin	-0.02%	-0.03%	-0.02%	-0.02%	-0.03%	-0.01%	0.01%	0.13%	0.17%	0.13%	0.13%	0.23%	

Interest Analysis 2011/12



Annual Average Investment

	Authority			Group Total		
	Av. Balance £'m	Interest £'k	Rate	Balance £'m	Interest £'k	Average Rate
Variable rate	7.4	58.6	0.79%	3,567	33,134	0.85%
Short-term fixed	9.5	149.1	1.57%	4,244	51,295	1.20%
Long-term fixed	0.5	9.7	na	1,136	27,967	2.50%
Externally Managed	0.0	0.0	na	329	5,089	1.84%
Total	17.4	217.4	1.25%	9,276	117,486	1.19%

Annual Average Borrowing

	Authority			Group Total		
	Av. Balance £'m	Interest £'k	Rate	Balance £'m	Interest £'k	Average Rate
Variable rate	0.0	0.0	na	717	17,946	1.15%
Short-term fixed	0.0	0.0	na	417	3,208	1.02%
Long-term fixed	20.9	1,347.1	6.45%	13,070	578,184	4.87%
LOBO	0.0	0.0	na	2,998	129,921	4.47%
Total	20.9	1,347.1	6.45%	17,202	729,258	4.49%